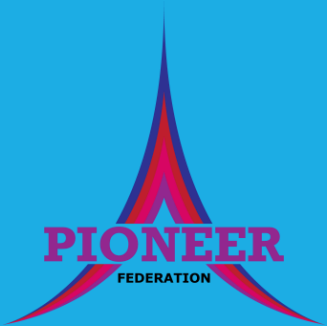


# COMING BACK TO SCHOOL

---

*What do we need to know and do?*



# What is the same?



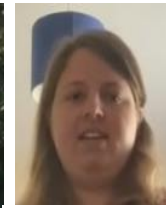
- The same grown ups are at our school
- We can wear our school uniform
- We will be in our usual school building
- Some of our friends will be there too
- We will have playtime and lunchtime
- We will learn and have fun!



Miss Munn



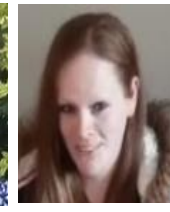
Mrs Boldero



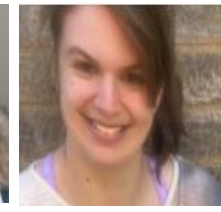
Miss Bews



Mrs Norris



Mrs King



Miss Jane



Mrs Leahy



Mr Cline



Mrs Neville



Mrs Carpenter



Miss Banks



Mrs T



Miss Hare



Mr Procter



Mrs Funnell



Mr Grey



Mr D

# What is different?



- We will come into school from a year group gate and we might go home at a slightly different time
- Not all of the children will be back at school and the classrooms will look a little bit different
- We might not be able to use all of the normal equipment in our lessons
- We will need to wash our hands lots and be careful not to touch each other
- Grown ups in school will have to clean our tables
- Break time and Lunch time will be at staggered times
- We will be with the same grown ups and children all day, including at break and lunch time
- Our timetables will be different to allow more time for PSHE and wellbeing activities



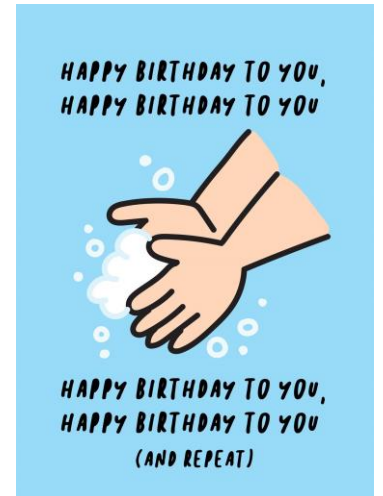
# What is our Code to Keeping Safe?



- We keep a safe space between us and other people whenever we can.

 **KEEP**  **A SAFE**  **DISTANCE** 

- We wash our hands regularly for 20 seconds using soap and water, including before we come to school or go home, after using the toilet and before and after break and lunchtime.
- We follow 'Catch it, Bin it, Kill it' and put used tissues straight in the bin.
- We sit and do our learning in the place we are asked to, using the equipment that we are given
- We follow our school Golden Rules as usual
- We are kind and caring towards other people – some people might feel worried.
- We listen to the instructions our grown ups give and follow them as best we can
- We have lots of fun with our learning!



*Always remember to....*

## **CATCH IT**

Germs spread easily. Always carry tissues and use them to catch your cough or sneeze.



## **BIN IT**

Germs can live for several hours on tissues. Dispose of your tissue as soon as possible.



## **KILL IT**

Hands can transfer germs to every surface you touch. Clean your hands as soon as you can.

